



European Aquaculture

Technology and Innovation Platform

www.eatip.eu / @eatip_eu

What is EATiP?



Aquaculture and the Consumer

Product
Quality,
Consumer
Safety &
Health

Sustainable
Feed
Production

Assuring a Sustainable Industry

Technology &
Systems

Managing the
Biological
Lifecycle

Aquatic Animal
Health & Welfare

Aquaculture in Society

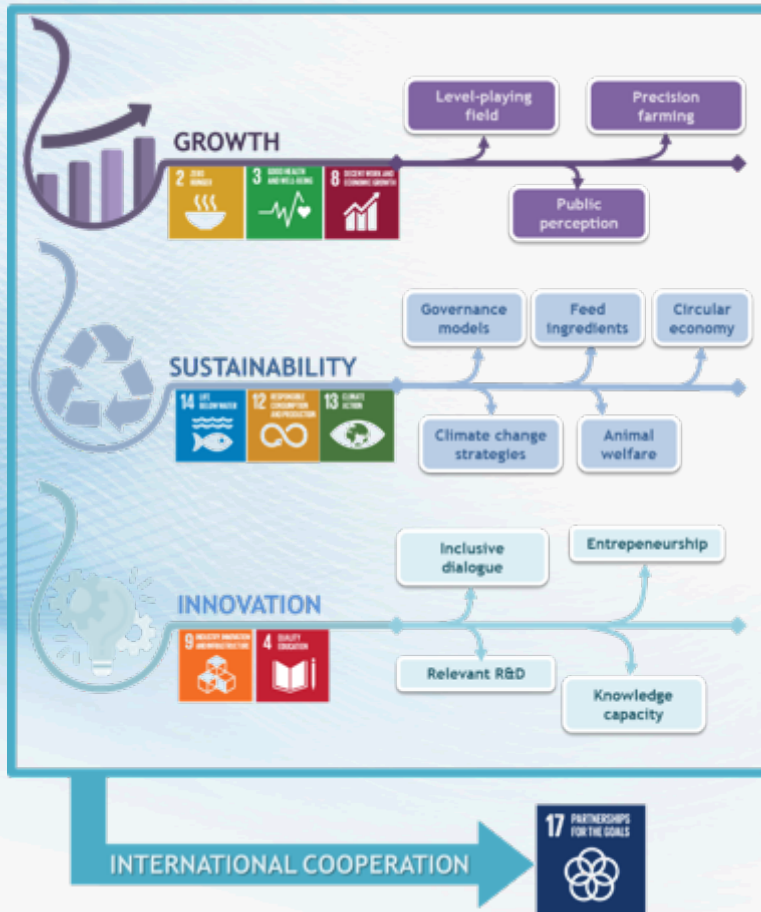
Integration
with the
Environment

Knowledge
Management

Governance
& Socio-
Economics

Social Licence

What is EATiP?



Circular Smart Aquaculture across the value chain

- Efficient **Energy & Water** use
- Address **scarcity of feed ingredients**
- Optimise **side streams** through **circular production systems**
- **Zero Waste**
- Build a targeted & **skilled workforce**
- Build **awareness** of aquaculture

LandSeaLot outcome



Applications in aquaculture

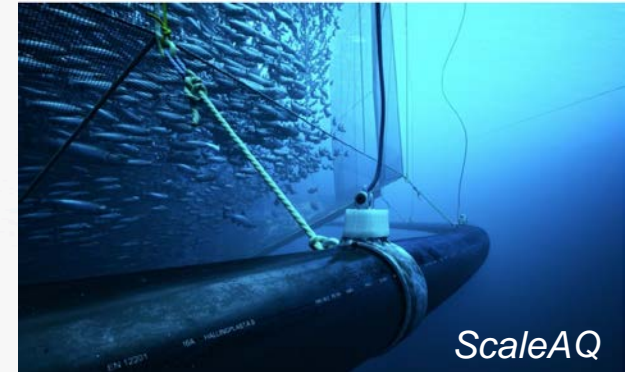
- Planning & siting
- Monitoring of impact
 - On environment (nutrients, chemicals)
 - On aquaculture (disease agents, HAB, pollution)
- Ecosystem-based management
- Optimisation
- Risk assessment
- Biosecurity

Target groups

- producers, suppliers, regulators, researchers

Implementation

- Environmental Performance regulation (AAM Guidance document)
- Compatibility
- User-friendliness
- Synergies with existing regulatory requirements (WFD/MSFD)



Interaction with AAM, AAC, Mission Ocean, S3 CoP